

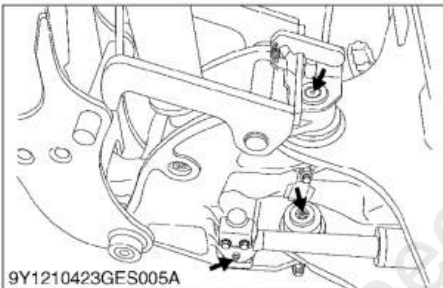
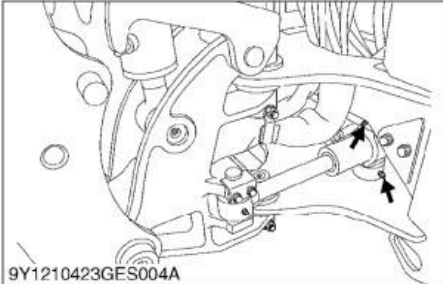
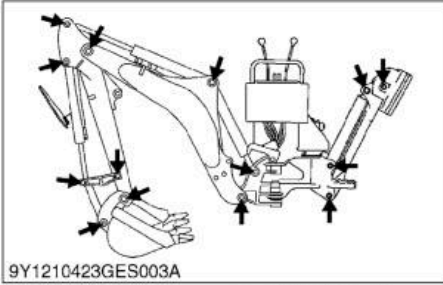
WSM

WORKSHOP MANUAL
BACKHOE

BH92

Кубота

[2] CHECK POINT OF EVERY 10 HOURS



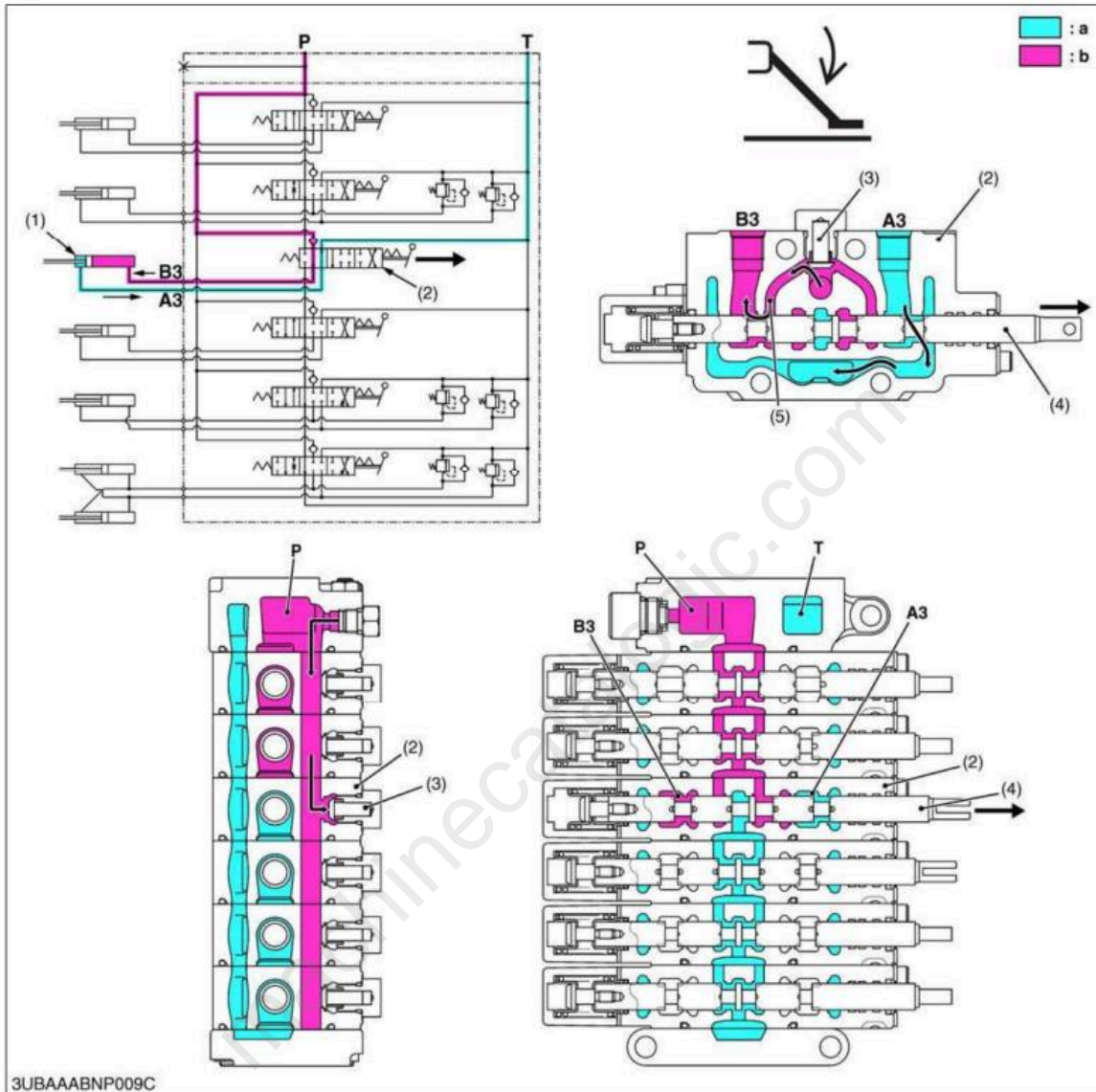
Greasing

1. Inject grease all grease nipples with a hand grease gun.

9Y1210423GEG0009US0

machinecatalogic.com

[D] Stabilizer RH
(A) Extend



3UBAAABNP009C

- (1) Stabilizer Cylinder RH
- (2) Stabilizer RH Control Valve
- (3) Load Check Valve
- (4) Spool
- (5) Bridge Passage

- P: P Port
- T: T Port
- a: Low Pressure
- b: High Pressure
- A3: A3 Port (From Stabilizer RH Cylinder)
- B3: B3 Port (To Stabilizer RH Cylinder)

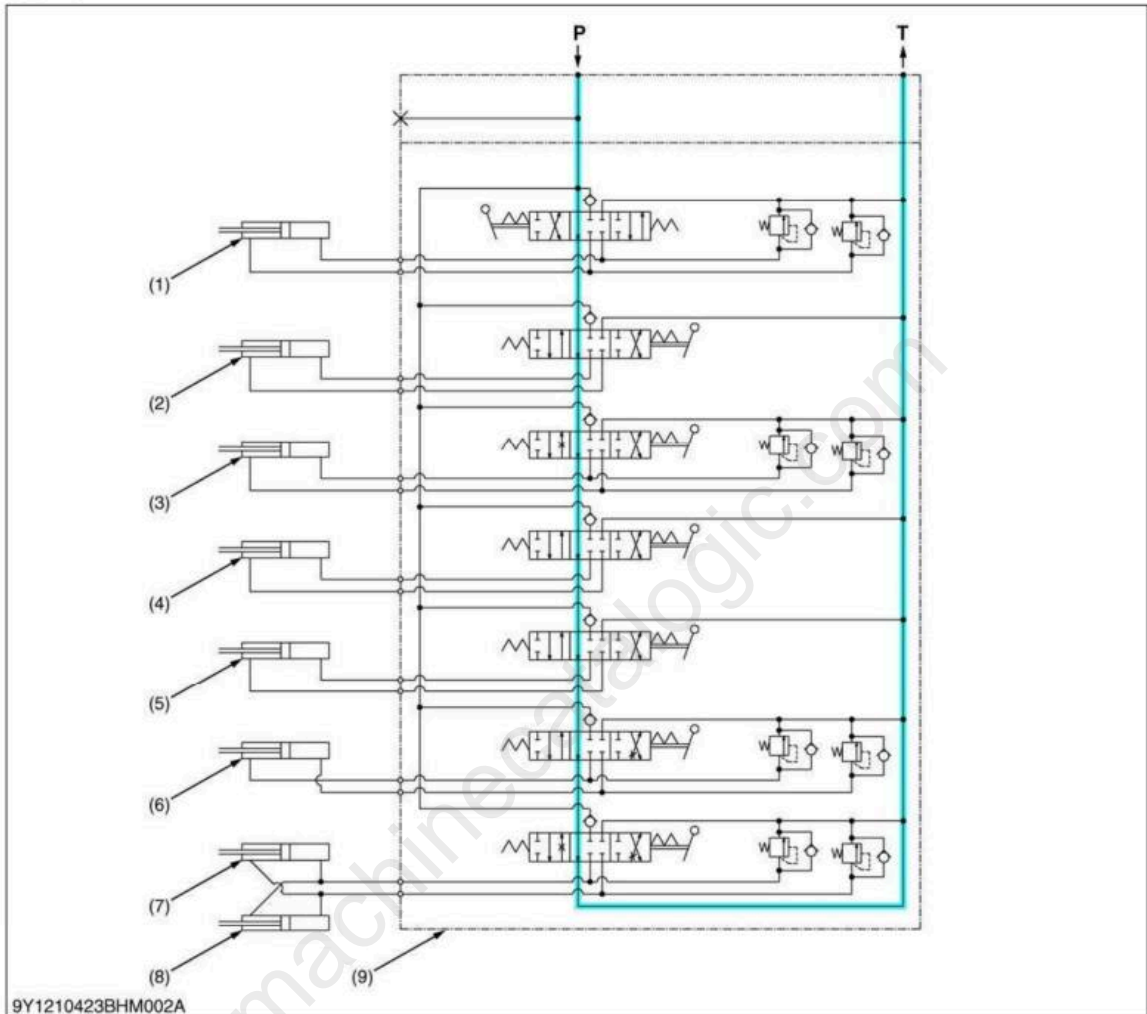
1. When the right stabilizer control lever is pulled to the downward to set to the "EXTEND" position, the spool (4) of the stabilizer RH control valve (2) moves to the right, which forms oil passage between bridge passage (5) and B3 port, and between A3 port and T port.
2. The pressure-fed oil from the P port opens the load check valve (3), and flows to B3 port to extend the stabilizer cylinder RH (1).
3. Return oil from the stabilizer cylinder RH (1) returns to the transmission case through the A3 port, low pressure passage and T port.

9Y1210423BHM0008U50

[2] OPTION

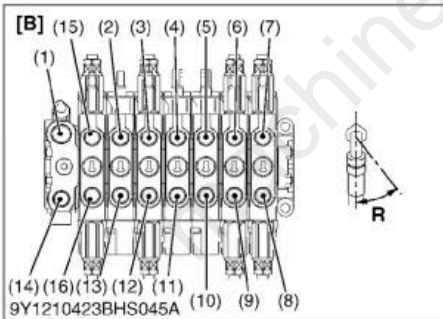
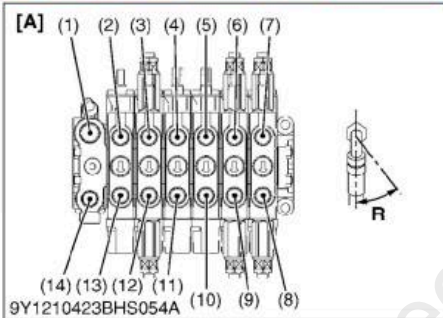
(1) Thumb (Hydraulic Type)

[A] Hydraulic Circuit



- | | | | |
|--------------------------|----------------------------|---------------------------|-------------------------------|
| (1) Thumb Cylinder | (4) Stabilizer Cylinder RH | (7) Swing Cylinder LH | P: From Hydraulic Pump |
| (2) Bucket Cylinder | (5) Stabilizer Cylinder LH | (8) Swing Cylinder RH | T: To Tank Port |
| (3) Dipperstick Cylinder | (6) Boom Cylinder | (9) Backhoe Control Valve | |

9Y1210423BHM0023US0



Hydraulic Hoses

1. Disconnect the hydraulic hoses from the control valve and remove the hydraulic hoses.

(When reassembling)

- Connect the hydraulic hoses at their original positions and be sure to connect the hose angle as indicated table below.

Port	Angle of Bent Tube
A6	R 20 ° (0.35 rad)

(Reference)

- Color of tape

	Color
A1, B1	Red
A2, B2	Orange
A3, B3	White
A4, B4	Green
A5, B5	Yellow

- | | |
|----------------------------------|--------------------------------|
| (1) T Port (Return) | (12) B2 Port (for Dipperstick) |
| (2) A1 Port (for Bucket) | (13) B1 Port (for Bucket) |
| (3) A2 Port (for Dipperstick) | (14) P Port (Pump) |
| (4) A3 Port (for Stabilizer RH) | (15) A0 Port (for Thumb) |
| (5) A4 Port (for Stabilizer LH) | (16) B0 Port (for Thumb) |
| (6) A5 Port (for Boom) | |
| (7) A6 Port (for Swing) | |
| (8) B6 Port (for Swing) | |
| (9) B5 Port (for Boom) | |
| (10) B4 Port (for Stabilizer LH) | |
| (11) B3 Port (for Stabilizer RH) | |

- [A] Standard
- [B] Thumb (Hydraulic Type) (Option)
- R: Installation Angle 20 ° (0.35 rad)

9Y1210423BHS0017US0

Dipperstick Cylinder, Boom and Boom Cylinder

1. Disconnect the hydraulic hoses (1) and remove the dipperstick cylinder (3).
2. Remove the pins (5), (6) and remove the boom (7).
3. Remove the pin (2) and remove the boom cylinder (4).
4. Disconnect the hydraulic hoses from boom cylinder (4).

(When reassembling)

- Connect the hydraulic hoses at their original positions.
- Lock the locking nuts to setting bolt may still be rotated.

- | | |
|---------------------------|---------------------------|
| (1) Hydraulic Hose | (5) Pin (1.5 x 5.24 in.) |
| (2) Pin (1.25 x 6.16 in.) | (6) Pin (1.5 x 10.20 in.) |
| (3) Dipperstick Cylinder | (7) Boom |
| (4) Boom Cylinder | |

9Y1210423BHS0018US0

Full Version Available

Kubota BH92 Backhoe Workshop Manual

This is a short preview. The complete manual contains all chapters, wiring diagrams, torque specifications and full service procedures.

VIEW THE FULL MANUAL

<https://machinecatalogic.com/kubota-bh92-backhoe-workshop-manual/>