

# WSM

---

WORKSHOP MANUAL  
**BRUSH CUTTER**

DM262-S, DM262-W,  
DH264-S, DH264-W,  
DM332-S, DM332-W

---

**Kubota**

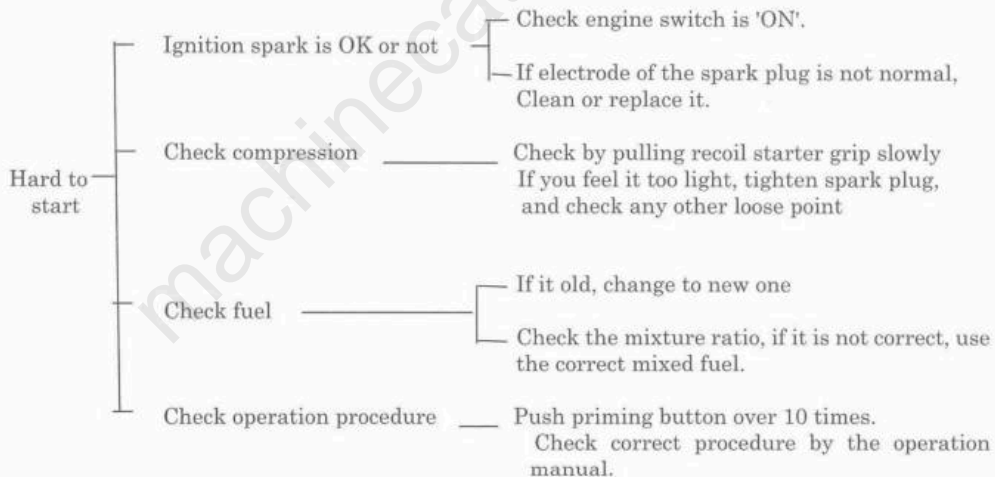


### Long time storage

When releasing the engine from operation for more than 30 days, you must service and store as follows with care to prevent the starting trouble or malfunction due to degeneration of fuel.

1. Drain the fuel from the fuel tank and run the engine with slow speed till it stop due to use up of fuel.
    - ⚠ Care the fuel taken out from the tank against heat and fire.
    - ⚠ Use of fire is strictly prohibited
  2. Wash the inside of fuel tank and fuel filter with white kerosene.
    - ⚠ Use of fire is strictly prohibited
  3. Removing the ignition plug, inject a small quantity of new lubrication oil through the plug hole. After a few revolutions with recoil starter, install the ignition plug. By pulling recoil starter again, stop it at the position where you feel it heavy.
  4. Clean the external surfaces with soft cloth and store it at a dry and no fire space.
    - ⚠ Do not wash the engine with water
- If you leave it over without draining fuel, impurities in the fuel could clog the fuel passage such as the carburetor, fuel filter or others, and cause engine troubles. Make sure to drain the fuel when storing the engine for a long time.

### Trouble shooting against hard to start

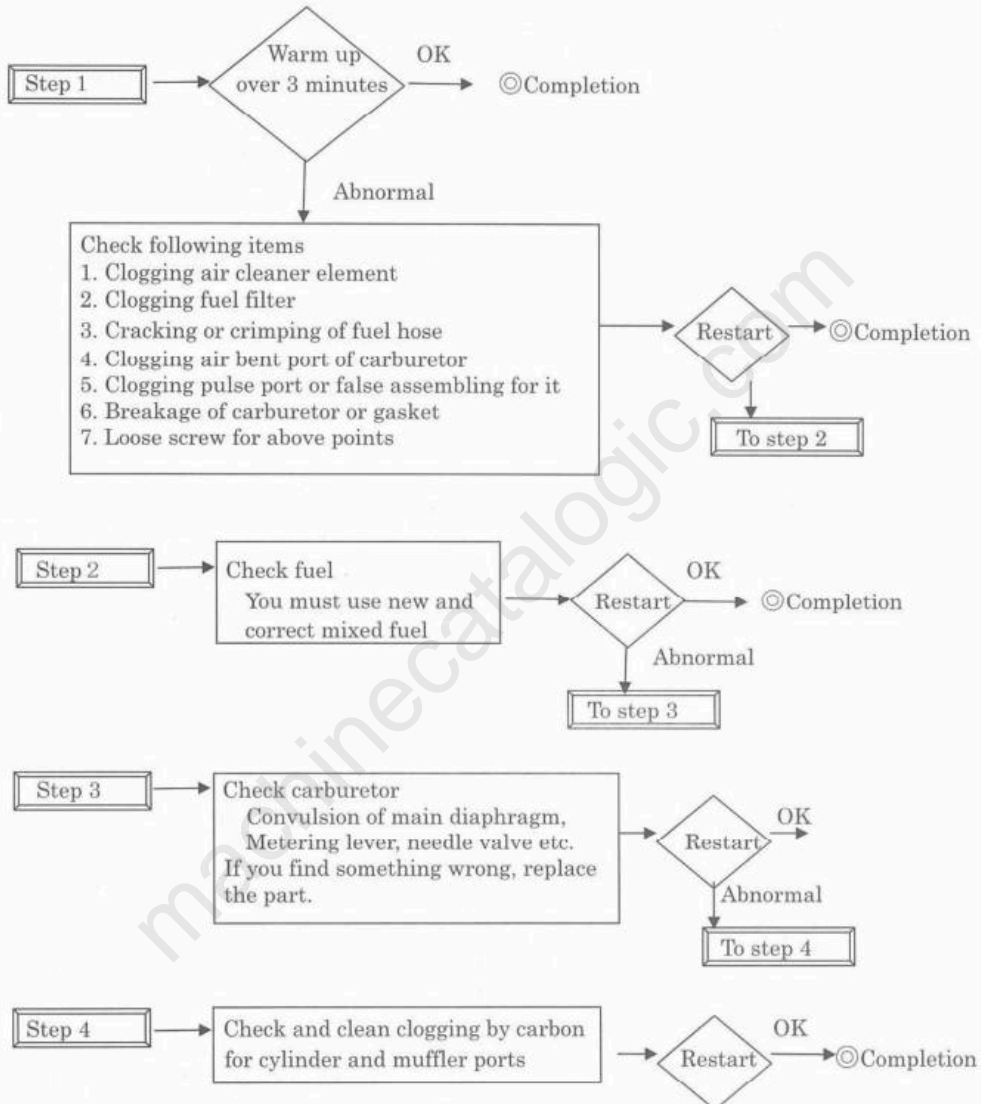


- Even if the engine does not start after checking above procedure, take it over to the expert.

# IV

## – 6 Troubleshooting

### 4) Poor acceleration, Becoming too high speed



## 3) Inspection, adjustment

Clean electrodes and insulator until taking any carbon or dust off.

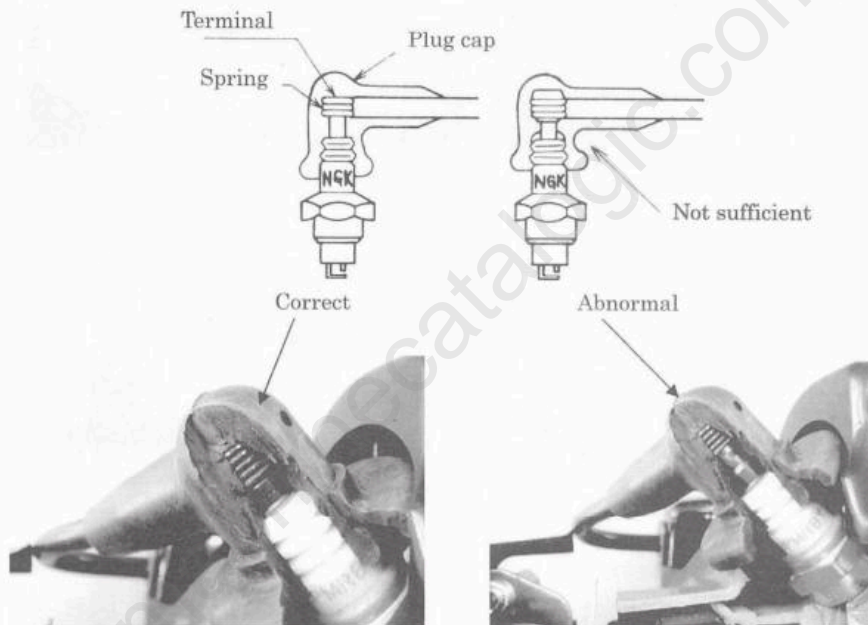
Adjust the clearance of spark gap with the specification.

'Plug cleaner' is efficient. You may use wire brush or abrasive paper, however take care to keep flat of the center electrode.

## 4) Points at servicing

If the spring in the plug cap is not correctly or not sufficiently inserted onto the plug terminal, the plug cap may be broken and cause electrification or fire. Therefore, insert the plug cap to the plug sufficiently.

Point : Insert the plug cap with clockwise twist. When you release it, pull it with counter clock wise twist.



# Full Version Available

Kubota DM332-W Brush Cutter Workshop Manual

This is a short preview. The complete manual contains all chapters, wiring diagrams, torque specifications and full service procedures.

**VIEW THE FULL MANUAL**

<https://machinecatalogic.com/kubota-dm332-w-brush-cutter-workshop-manual/>