

WSM

WORKSHOP MANUAL
DIESEL ENGINE

**DIESEL PARTICULATE FILTER
HANDLING MANUAL**

Kubota

3. DPF MAINTENANCE FLOW

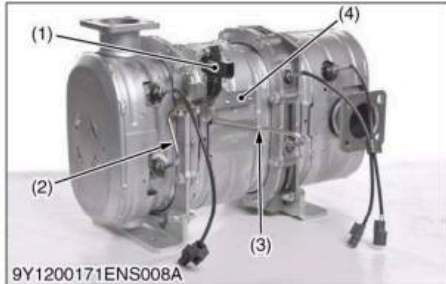
When the following condition happened, DPF need to have cleaning or exchange. There are two types of maintenance flow as "Clean & Return" and "Exchange". Please execute the correct maintenance according to distributor's instructions.

- (1) Every 3,000 hours of operation (Scheduled maintenance)
- (2) Cleaning request due to heavy soot accumulation (P-Code:P3008, J1939:3701-0)
- (3) Cleaning request due to increase the frequency of regeneration (P-Code:P3024, J1939:523602-0)

machinecatalogic.com

[3] DISASSEMBLY OF DPF MUFFLER FULL ASSY

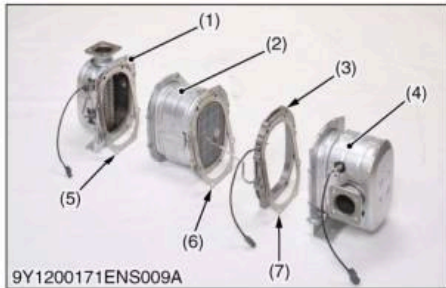
(1) V3800



Differential Pressure Sensor

1. Remove clamp, and disconnect tube from pressure pipe 1 (3).
2. Remove clamp, and disconnect tube from pressure pipe 2 (2).
3. Unscrew mounting bolts, and remove differential pressure sensor (1).
4. Unscrew fixed bolts of pressure pipe 1 and 2.
5. Remove DPF stay 2 (4).

- | | |
|----------------------------------|---------------------|
| (1) Differential Pressure Sensor | (3) Pressure Pipe 1 |
| (2) Pressure Pipe 2 | (4) DPF Stay 2 |



DPF Filter Complete

1. Loosen all bolts attached to the DOC catalyst complete, DPF filter complete and DPF outlet body.
2. Remove all bolts, and separate DOC catalyst complete, DPF filter complete and DPF outlet body.

■ NOTE

- When disassembling, make sure not to damage pressure pipe and exhaust temperature sensor. If damaged, replace with new ones.
- Take good care of the DOC catalyst complete (4), DPF collar (3), and DPF outlet body (1) so as not to get dust, water, oil, and shock on them during storage. As the honeycomb in the DOC catalyst is ceramic, take special care to handle it.
- Be sure to loosen the temperature sensor tightening nut or the differential pressure pipe tightening nut with crowfoot wrench to prevent the damage of the sensor or pipe. If it is still hard to loosen, apply the lubricant spray to threaded portion and soak it with lubricant.

- | | |
|---------------------------|----------------|
| (1) DPF Outlet Body | (5) DPF Gasket |
| (2) DPF Filter Complete | (6) DPF Gasket |
| (3) DPF Collar | (7) DPF Gasket |
| (4) DOC Catalyst Complete | |

[7] PACKING, DELIVERING, AND HANDLING STANDARD OF DPF FILTER COMPLETE

Follow the below procedures to pack the separated DPF filter complete and to send it to a cleaning contractor.

[Packing and delivering]

- (1) Refer to the example of packaging, cover and seal the DPF filter complete with a plastic bag so that soot and ash are not scattered in the air, and pack it in a cardboard box having cushioning material in it.
- (2) Put "FRAGILE" sticker on the package.
- (3) Make sure not to drop DPF filter complete when handling and carrying.



Packing and Delivering of DPF Filter Complete (Example)

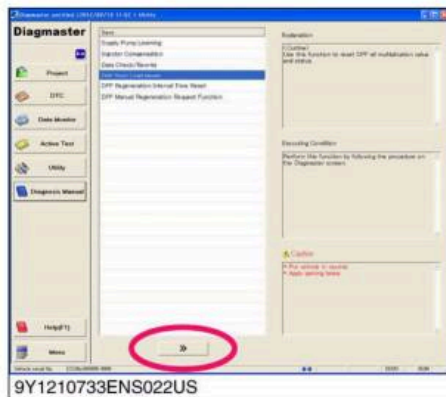
1. Seal the removed DPF filter complete with a plastic bag as shown in the photograph **[A]**.
2. Put a cushioning material in the bottom of the prepared cardboard box.
3. Put the DPF filter complete with the sealed plastic bag on a cushioning material.
4. Put a cushioning material in around the DPF filter complete as shown in the photograph **[B]**.
5. Put a cushioning material over the DPF filter complete as shown in the photograph **[C]**.
6. Enclose the completed DPF Cleaning Order Form in the cardboard box and close it.
7. Put "FRAGILE" sticker on the cardboard box.
8. Write the address and send it to a cleaning contractor.

[Cautions for handling]

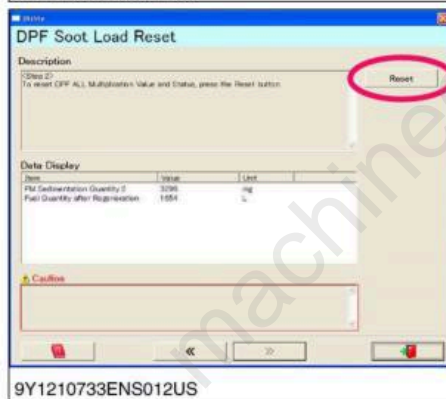
- (1) Workers should wear a mask and goggles, and other required protective equipments according to local relevant regulations whenever cleaning DPF.
- (2) The removed soot and ash should be collected on a filter etc. and safely disposed by an industrial waste disposer according to local relevant regulations.

[Disposal standard of DPF]

- (1) DPF should be disposed by an industrial waste disposer according to local relevant regulations.

**Step2**

1. Reset the value by "DPF Soot Load Reset" in the utility functions of the diagnosis tool.



Full Version Available

Kubota DPF Engine Workshop Manual

This is a short preview. The complete manual contains all chapters, wiring diagrams, torque specifications and full service procedures.

VIEW THE FULL MANUAL

<https://machinecatalogic.com/kubota-dpf-engine-workshop-manual/>