

# WSM

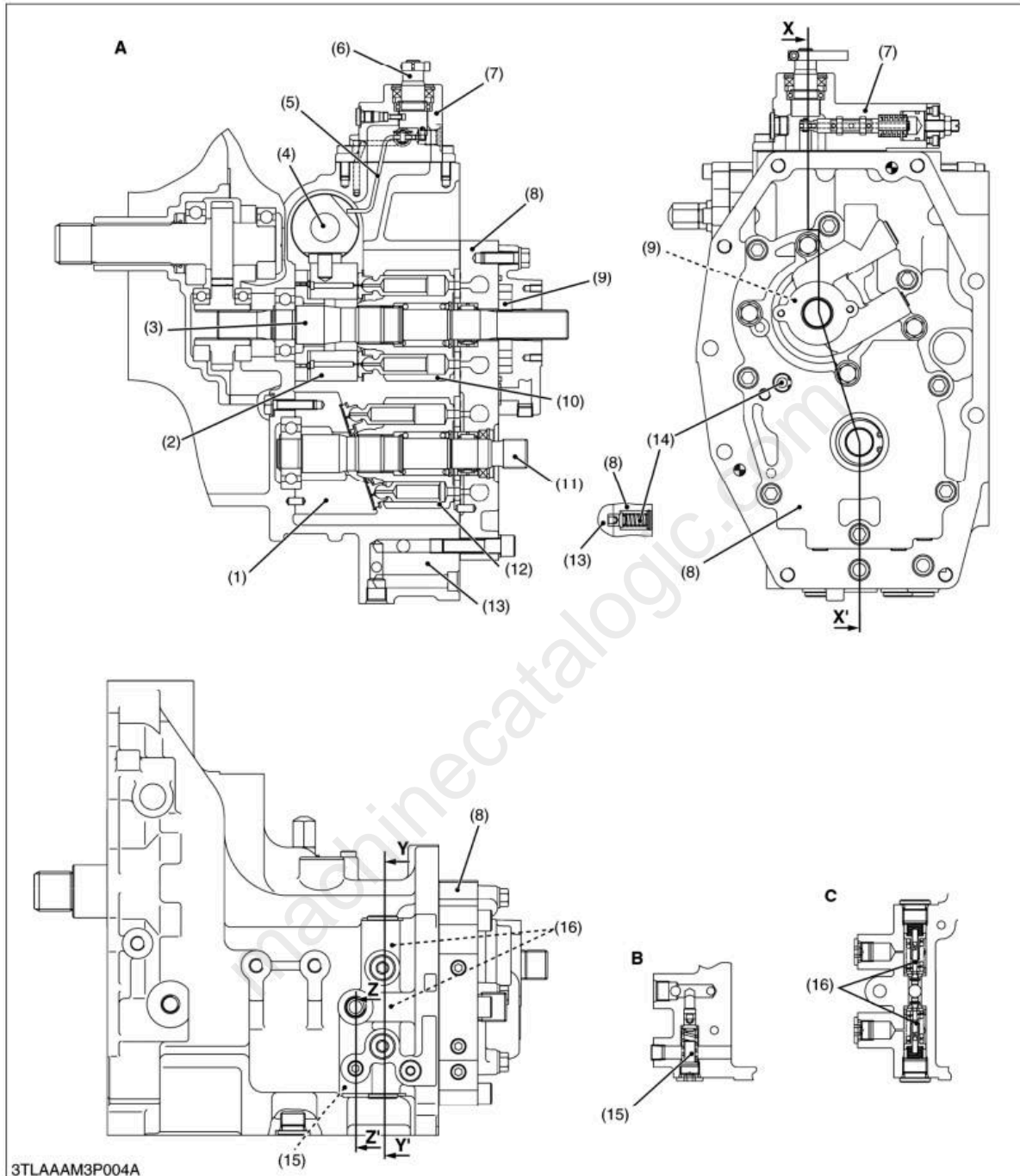
---

WORKSHOP MANUAL  
**TRACTOR**

**L4400HST  
(SUPPLEMENT)**

---

**Kubota**



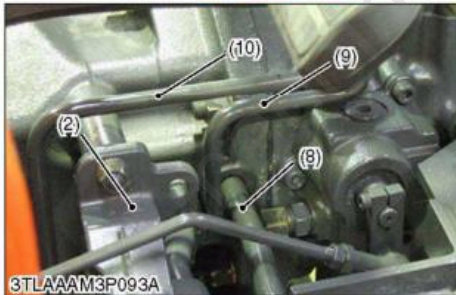
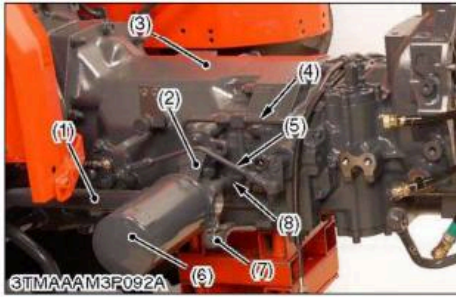
- |                         |                             |   |
|-------------------------|-----------------------------|---|
| (1) Fixed Swashplate    | (7) Regulator Assembly      | (13) HST Case                             |
| (2) Variable Swashplate | (8) Port Block Cover        | (14) Case Relief Valve                    |
| (3) Pump Shaft          | (9) Charge Pump             | (15) Charge Relief Valve                  |
| (4) Servo Piston        | (10) Cylinder Block (Pump)  | (16) Check and High Pressure Relief Valve |
| (5) Feedback Lever      | (11) Motor Shaft            |   |
| (6) Control Shaft       | (12) Cylinder Block (Motor) |   |

**A : Sectional View X-X'**  
**B : Sectional View Z-Z'**  
**C : Sectional View Y-Y'**

**[HST] (continued)**

Symptom	Probable Cause	Solution	Reference Page
<b>Loss of Power</b>	Oil level is low	Check oil level or fill oil to proper level	HG-1
	Speed control pedal linkage defective	Repair linkage	H3-S9
	Charge pressure is too low	1. Replace oil filter cartridge	HG-4
		2. Check charge pressure	H3-S6
		3. Inspect or flush charge relief valve	H3-S31
	Check and high pressure relief valve does not move smoothly	Inspect or replace check and high pressure relief valve	H3-S31
Component parts defective	Replace hydrostatic transmission assembly	H3-S14	
<b>Transmission Oil Over Heats</b>	Low transmission oil level	Fill transmission oil level up to proper level	HG-1
	Radiator net clogged	Clean radiator load	HG-4
	Excessive machine load	Reduce machine load	-
	Improper charge pressure	1. Check high relief pressure	H3-S5
		2. Replace transmission oil filter cartridge	HG-4
		3. Replace check and high pressure relief valve	H3-S31
4. Inspect and replace charge relief valve		H3-S31	
Component parts defective	Replace hydrostatic transmission assembly	H3-S14	
<b>Machine Will Not Stop in Neutral Position</b>	Speed control linkage is out of adjustment oil sticking	Repair or replace linkage	H3-S9
		Adjust neutral adjustment	H3-S7
<b>System Operates in One Direction Only</b>	Speed control linkage defective	Repair or replace linkage	H3-S9
	Check and high pressure relief valve defective	Replace check and high pressure relief valve	H3-S31

W1081018

**(2) Separating HST Housing Case from Mid Case****Hydraulic Filter Bracket and HST Charge Pump Pipe**

1. Disconnect the HST pipe (4).
2. Disconnect the HST pedal rod (5).
3. Remove the suction pipe (1).
4. Disconnect the delivery pipe (7).
5. Remove the hydraulic filter bracket (2) from the mid case.
6. Place the disassembling stand under the mid case.
7. Remove the HST charge pump pipe (8) from the mid case.
8. Remove the HST regulator valve delivery pipe (9).
9. Remove the PTO clutch delivery pipe (10).
10. Hoist the HST housing case with the nylon sling.
11. Remove the HST housing case and the mid case mounting nuts.

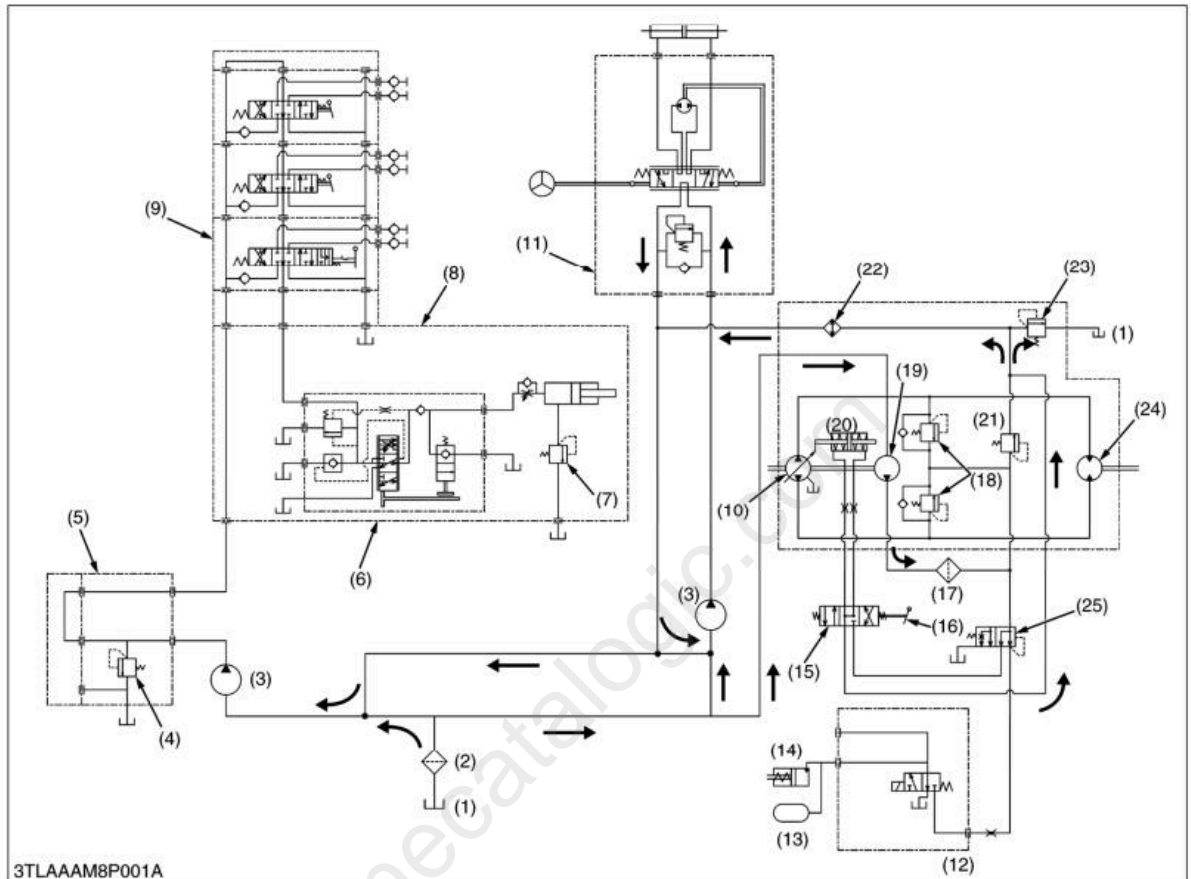
**(When reassembling)**

Tightening torque	HST housing case and mid case mounting nut	77.5 to 90.2 N·m 7.9 to 9.2 kgf·m 57.1 to 66.5 lbf·ft
-------------------	--	---

- |                              |                                       |
|------------------------------|---------------------------------------|
| (1) Suction Pipe             | (6) Hydraulic Filter Cartridge        |
| (2) Hydraulic Filter Bracket | (7) Delivery Pipe                     |
| (3) Mid Case                 | (8) HST Charge Pump Pipe              |
| (4) HST Pipe                 | (9) HST Regulator Valve Delivery Pipe |
| (5) HST Pedal Rod            | (10) PTO Clutch Delivery Pipe         |

W1248025

# 1. HYDRAULIC CIRCUIT



- |                           |                             |   |   |
|---------------------------|-----------------------------|---|---|
| (1) Transmission Case     | (8) Hydraulic Cylinder      | (14) PTO Clutch Pack                      | (19) Charge Pump                        |
| (2) Hydraulic Filter      | (9) Auxiliary Control Valve | (15) Regulator Valve                      | (20) Servo Piston                       |
| (3) Hydraulic Pump        | (10) Pump Cylinder Block    | (16) HST Pedal                            | (21) Charge Relief Valve                |
| (4) Relief Valve          | (11) Rear Hydraulic Block   | (17) Filter                               | (22) Oil Cooler                         |
| (5) Front Hydraulic Block | (12) PTO Clutch Valve       | (18) Check and High Pressure Relief Valve | (23) Case Relief Valve                  |
| (6) Control Valve         | (13) Accumulator            |   | (24) Motor Cylinder Block               |
| (7) Safety Valve          |                             |   | (25) PTO Clutch Pressure Priority Valve |

In L4400HST, the PTO clutch pressure priority valve (25) is installed to the HST housing case.

The PTO pressure priority valve (25) switches the pressurized oil from the hydraulic pump (3) to the PTO clutch and HST regulator valve (HST servo valve) (15).

When the oil pressure at the PTO pressure priority valve (25) is below the setting pressure, approx. 14.0 to 15.0 kgf/cm<sup>2</sup> (1.38 to 1.47 MPa, 199 to 213 psi) at engine idling speeds, the PTO pressure priority valve (25) delivers preferentially the oil from the hydraulic pump (3) to the PTO clutch valve to operate the PTO clutch.

# Full Version Available

Kubota L4400HST Tractor Workshop Manual (Supplement)

This is a short preview. The complete manual contains all chapters, wiring diagrams, torque specifications and full service procedures.

[VIEW THE FULL MANUAL](#)