

WSM

WORKSHOP MANUAL
FRONT LOADER

LA714AU-C

Kubota

3. LUBRICANTS

Place	Capacity	Lubricants, type of grease
	L4600	
	4WD HST	
Transmission case	40.0 L 10.6 U.S.gals 8.80 Imp.gals	KUBOTA UDT or SUPER UDT fluid*
Grease fitting	Until grease overflows.	Moly Ep type grease**

■ **NOTE**

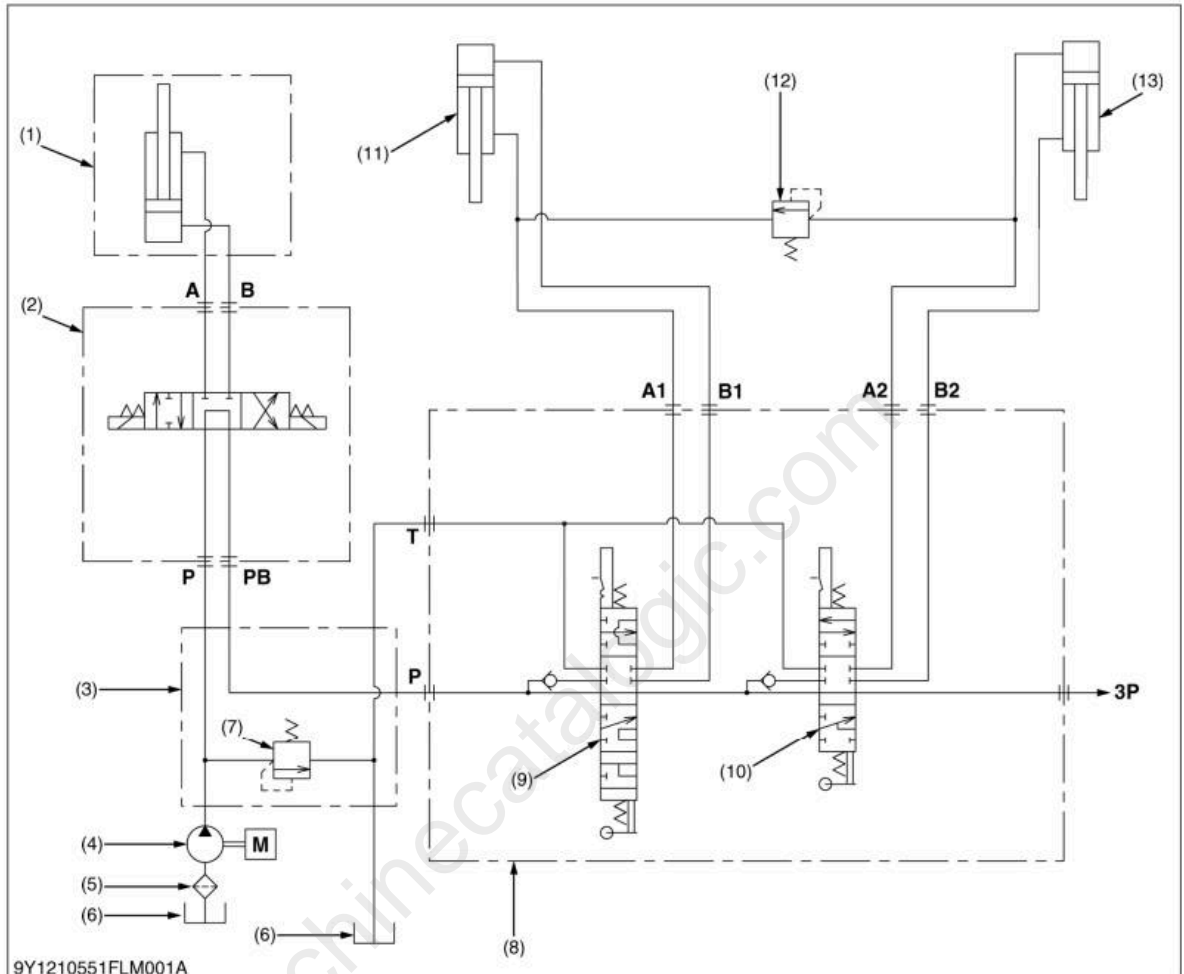
- *KUBOTA original transmission hydraulic fluid.
- ** "Extreme pressure" and containing Molybdenum disulfide is recommended. This grease may specify "Moly Ep" on its label.

9Y1210780GEG0002US0

machinecatalogic.com

1. HYDRAULIC CIRCUIT

LA714AU-C



9Y1210551FLM001A

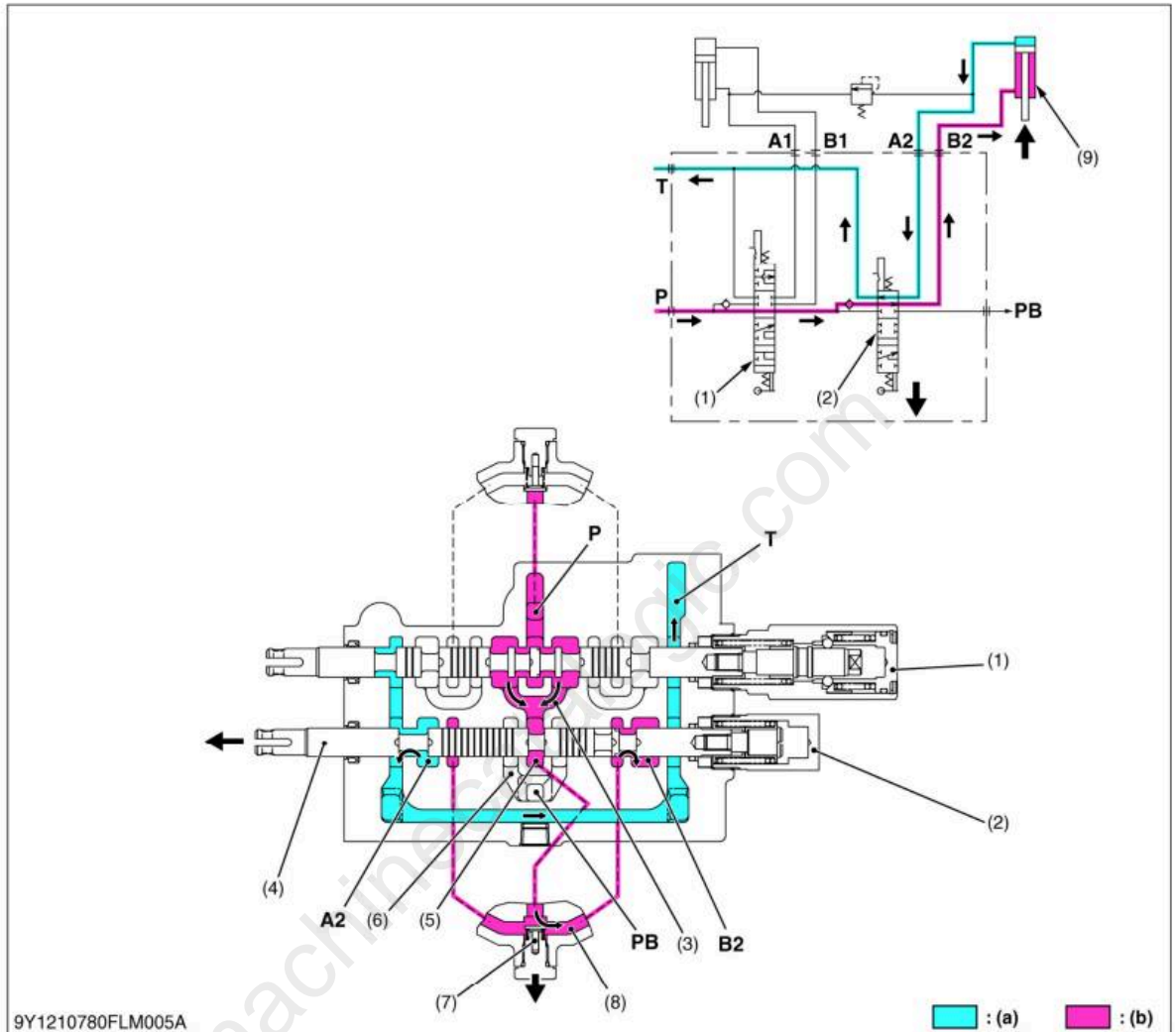
- | | | | |
|--|---------------------------|---|--|
| (1) Hydraulic Cylinder(s) and Hydraulic Hose(s) (Pipes) (Option) | (7) Relief Valve | P: Pump Port | A: Third Function Cylinder A Port |
| (2) Third Function Valve (Option) | (8) Loader Control Valve | PB: Power Beyond Port | B: Third Function Cylinder B Port |
| (3) Hydraulic Block | (9) Boom Control Valve | T: Tank Port | A1: Boom Cylinder A1 Port |
| (4) Hydraulic Pump | (10) Bucket Control Valve | 3P: Tractor Three Point Hydraulic Cylinder | B1: Boom Cylinder B1 Port |
| (5) Oil Filter | (11) Boom Cylinder(s) | | A2: Bucket Cylinder A2 Port |
| (6) Transmission Case | (12) Port Relief Valve | | B2: Bucket Cylinder B2 Port |
| | (13) Bucket Cylinder(s) | | |

The hydraulic cylinders and the hydraulic hoses (pipes) (1), and the third function valve are option parts.
The hydraulic oil flow is controlled by the loader control valve (8).

9Y1210780FLM0001US0

[3] BUCKET CYLINDER CONTROL

"ROLL-BACK" Position



9Y1210780FLM005A

- (1) Boom Control Section
- (2) Bucket Control Section
- (3) PB Passage 1
- (4) Spool (Bucket)
- (5) Neutral Passage 2
- (6) PB Passage 2

- (7) Load Check Valve
- (8) Passage 2
- (9) Bucket Cylinder

P: P Port

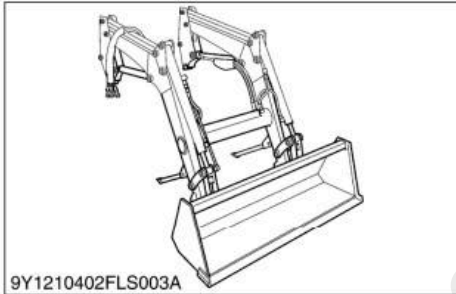
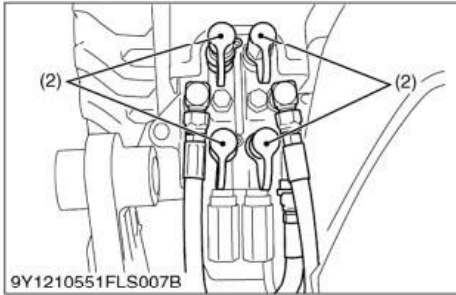
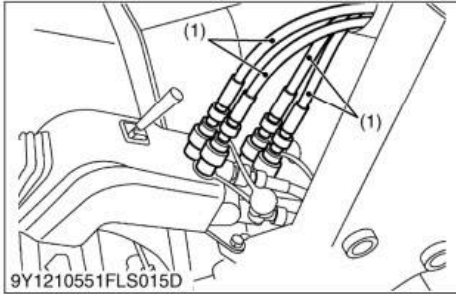
T: T Port

PB: Power Beyond Port
A2: A2 Port
 (From Bucket Cylinder)
B2: B2 Port
 (To Bucket Cylinder)

(a) Low Pressure Oil
 (b) High Pressure Oil

1. When the operator rolls back the bucket, the spool (bucket) (4) of the bucket control section (2) is pulled out from the loader control valve. Thus it forms oil passage between passage 2 (8) and B2 port, also between A2 port and T port.
2. The pressure-fed oil from the P port flows to the neutral passage 2 (5) through the boom control section (1) and PB passage 1 (3). As the oil passage from the neutral passage 2 (5) to the PB passage 2 (6) is closed by the spool (4), this oil opens the load check valve (7), and flows through the notched section of the spool (4) and B2 port to retract the bucket cylinder (9).
3. Return oil from the bucket cylinder (9) flows to the transmission case through the A2 port and T port.

9Y1210780FLM0007US0



Hoses

1. Slowly release all hydraulic pressure by moving the hydraulic control lever in all directions.
2. Disconnect the hydraulic hoses (1) with quick couplers at the control valve and place them on the right side of the boom.
3. Place the anti-dust caps (2) on the quick coupler ends.
4. Start the engine and slowly back the tractor away from the loader.

(1) Hydraulic Hose

(2) Anti-dust Cap

9Y1210780FLS0004US0

Full Version Available

Kubota LA714AU-C Front Loader Workshop Manual

This is a short preview. The complete manual contains all chapters, wiring diagrams, torque specifications and full service procedures.

VIEW THE FULL MANUAL

<https://machinecatalogic.com/kubota-la714au-c-front-loader-workshop-manual/>