

WSM

WORKSHOP MANUAL
FRONT LOADER

LA714AU, LA854AU

Kubota

3. LUBRICANTS

Place	Capacity			Lubricants, type of grease
	L3240 L3540	L4240	L5240 L5740	
Transmission case	42 L 11.1 U.S.gals 9.2 Imp.gals	43 L 11.4 U.S.gals 9.5 Imp.gals	45 L 11.9 U.S.gals 9.9 Imp.gals	KUBOTA UDT or SUPER UDT fluid*
Grease nipples	Until grease overflows.			Moly Ep type grease**

■ **NOTE**

- *KUBOTA original transmission hydraulic fluid.
- ** "Extreme pressure" and containing Molybdenum disulfide is recommended. This grease may specify "Moly Ep" on its label.

9Y1210402GEG0002US0

machinecatalogic.com

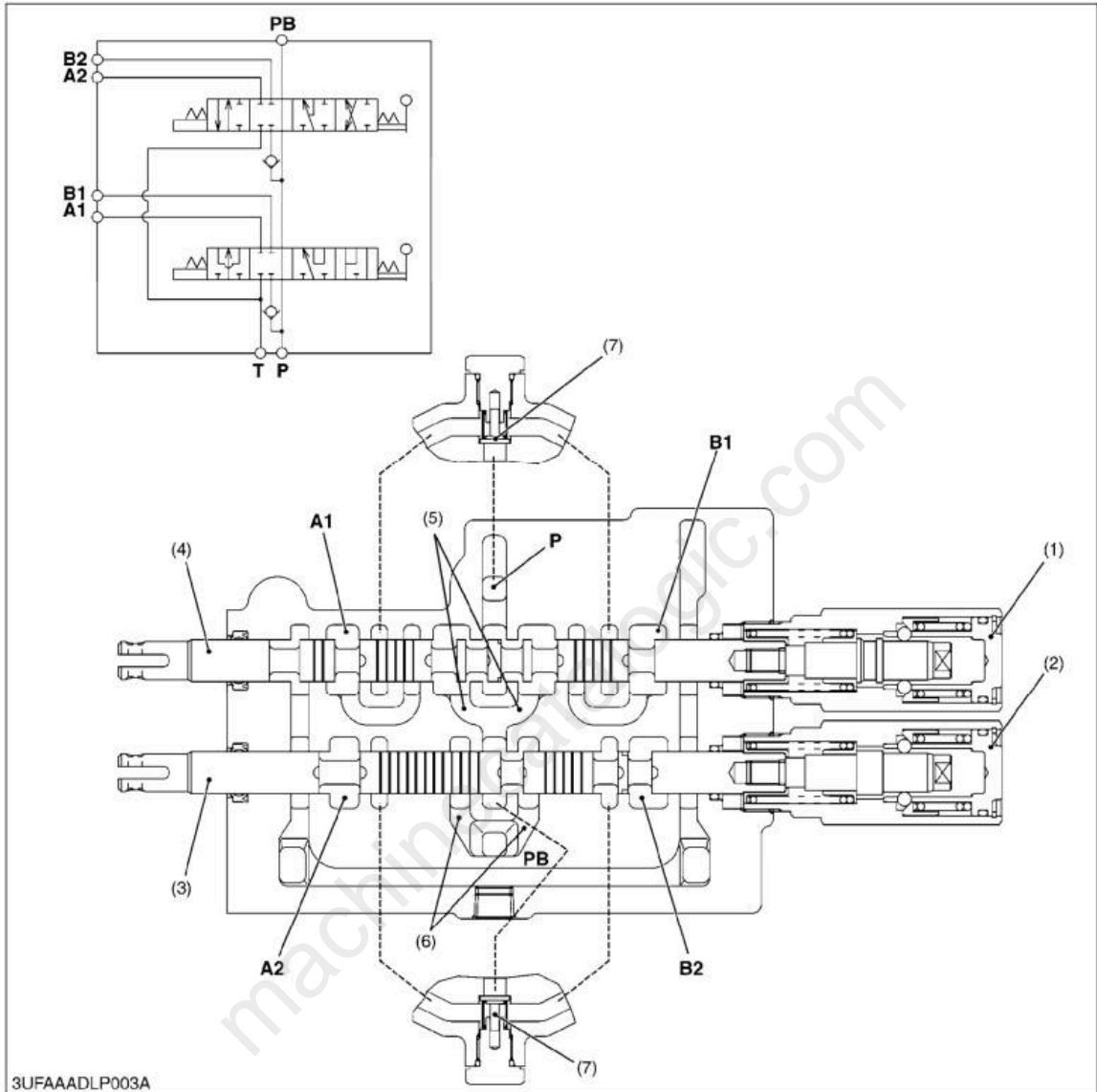
MECHANISM

CONTENTS

1. SELF-LEVELING	1-M1
[1] PARALLEL LINKAGE TYPE	1-M1
[2] PORT RELIEF VALVE	1-M2
2. HYDRAULIC CIRCUIT	1-M3
[1] OIL FLOW	1-M3
3. HYDRAULIC BLOCK	1-M4
4. CONTROL VALVE ASSEMBLY	1-M5
[1] 4 POSITION BUCKET CONTROL TYPE	1-M5
(1) Structure	1-M5
(2) Operation	1-M6
5. 3rd. FUNCTION VALVE (Option)	1-M7
[1] HYDRAULIC CIRCUIT	1-M7
[2] 3rd. FUNCTION SOLENOID VALVE OPERATION	1-M8
[3] 3rd. FUNCTION RELIEF VALVE	1-M11
[4] ELECTRICAL CIRCUIT	1-M12

(2) Operation

Neutral



3UFAAADLP003A

- (1) Boom Control Section
- (2) Bucket Control Section
- (3) Spool
- (4) Spool

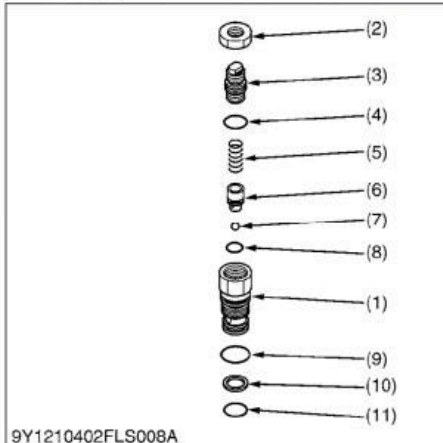
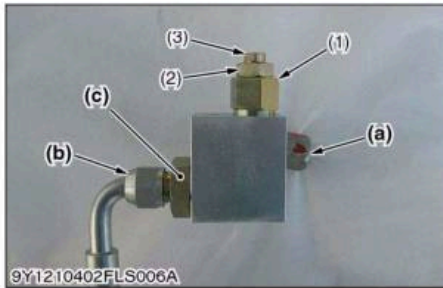
- (5) PB Passage 1
- (6) PB Passage 2
- (7) Load Check Valve

- T : T Port
- P : P Port
- A1 : A1 Port
- A2 : A2 Port

- B1 : B1 Port
- B2 : B2 Port
- PB : PB Port

9Y1210402FLM0006US0

(2) Port Relief Valve



Port Relief Valve Setting Pressure

1. Attach the hydraulic pressure tester between bucket side hose (b) and port relief valve block adapter (c).
2. Raise up boom about 1 m from ground.
3. Dump bucket to end.
4. Raise up boom during dump end.
5. Check the hydraulic pressure of boom or bucket side.
6. If the pressure is incorrect, need to adjust.
7. Loose the lock nut (2).
8. Adjust the adjusting screw (3).
9. Tighten the lock nut (2).
10. Repeat checking and adjusting.

Port relief valve setting pressure	Factory specification	LA714 LA854	10.51 to 11.09 MPa 107.2 to 113.0 kgf/cm ² 1525 to 1608 psi
------------------------------------	-----------------------	----------------	--

Condition

- Engine speed :
Approx. 2700 min⁻¹ (rpm) (Except L5240)
Approx. 2600 min⁻¹ (rpm) (L5240)
- Oil temperature : 45 to 55 °C (113 to 131 °F)

Tightening torque	Lock nut	19.6 to 23.6 N-m 2.00 to 2.40 kgf-m 14.5 to 17.4 lbf-ft
	Port relief valve and block	34.0 to 39.6 N-m 3.47 to 3.97 kgf-m 25.1 to 28.7 lbf-ft

NOTE

- Refer to L40 Series "L40 Series Tractor Workshop Manual (9Y121-01090)". It is available to check the pressure by the way. In that case, use a adapter of G1/2 and M12 × 1.5.

- | | |
|---------------------|-------------------------------------|
| (1) Plug | (a) To Boom Cylinder |
| (2) Lock Nut | (b) To Bucket Cylinder |
| (3) Adjusting Screw | (c) Port Relief Valve Block Adapter |
| (4) O-ring | |
| (5) Spring | |
| (6) Poppet | |
| (7) Ball | |
| (8) O-ring | |
| (9) O-ring | |
| (10) Back-up Ring | |
| (11) O-ring | |

9Y1210402FLS0025US0

Full Version Available

Kubota LA714AU Front Loader Workshop Manual

This is a short preview. The complete manual contains all chapters, wiring diagrams, torque specifications and full service procedures.

[VIEW THE FULL MANUAL](https://machinecatalogic.com/kubota-la714au-front-loader-workshop-manual/)

<https://machinecatalogic.com/kubota-la714au-front-loader-workshop-manual/>