

WSM

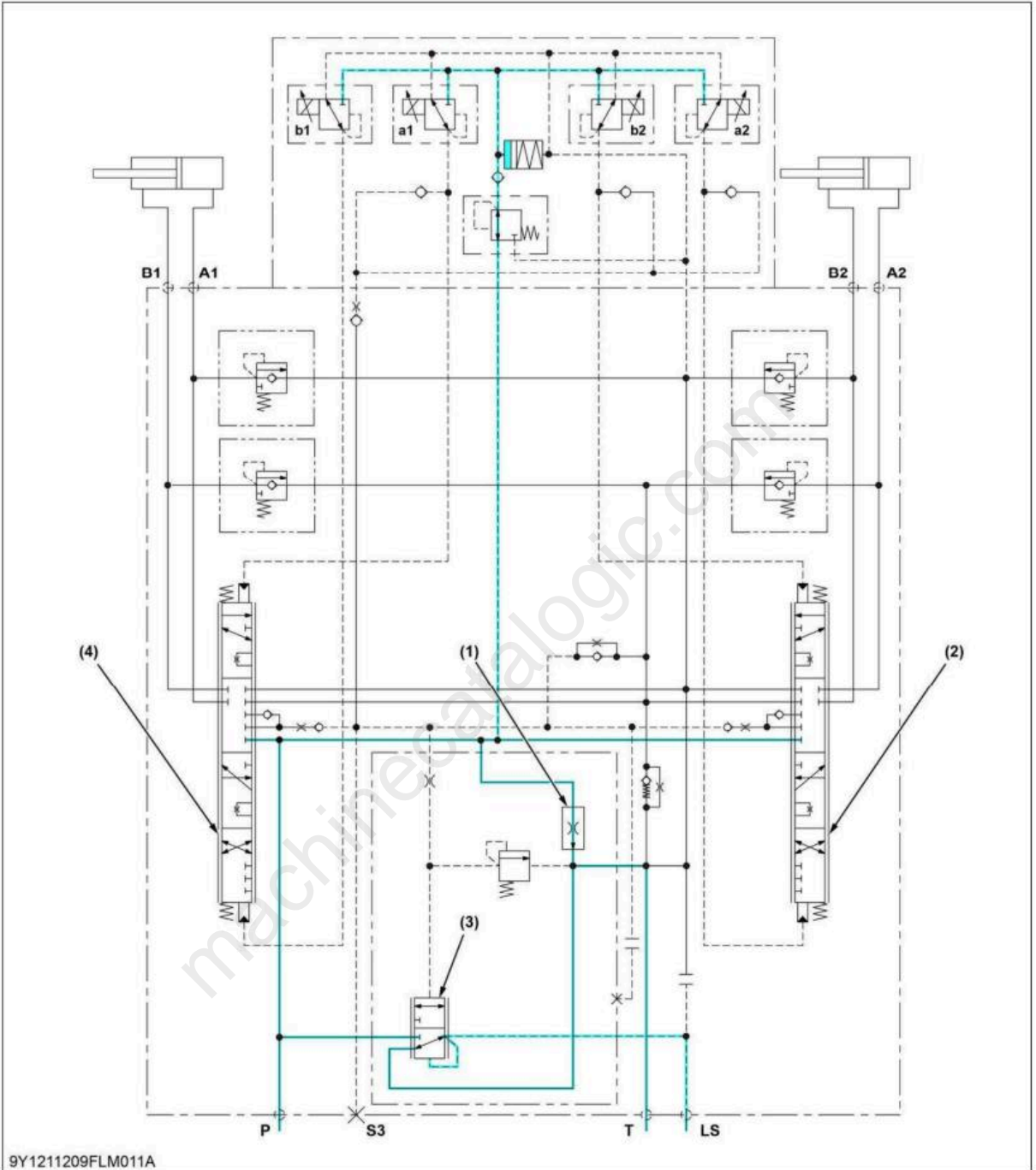
WORKSHOP MANUAL
FRONT LOADER

LM2605

Kubota

4. FRONT LOADER

machinecatalogic.com



- (1) Heater valve
- (2) Bucket control valve
- (3) LS copy valve

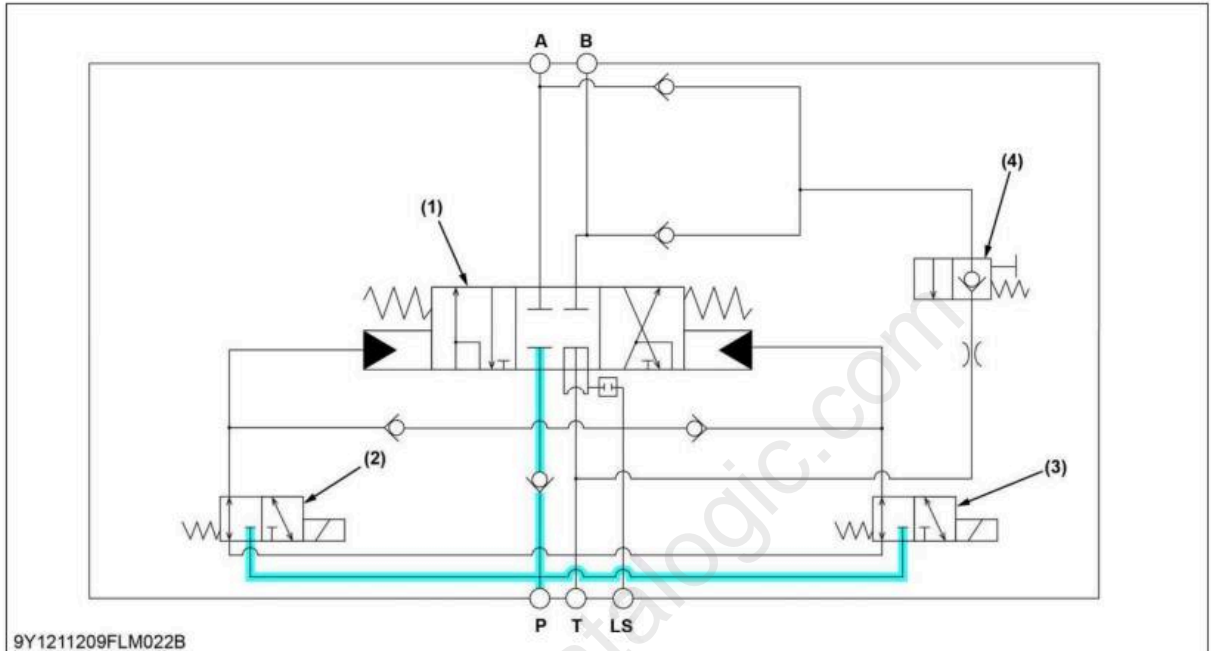
- (4) Boom control valve
- P: P port
- T: T port

- LS: LS port
- A1: A1 port
- A2: A2 port

- B1: B1 port
- B2: B2 port

1.4.1.2.1 3rd Function valve at neutral position

1. Both activation switches A and B are not pressed.
2. Both solenoid valves A (2) and B (3) are not activated. As a result, system pressure passage between P port and both ends of control valve (1) are closed.
3. Pressure-fed oil from P port does not flows to A and B ports.



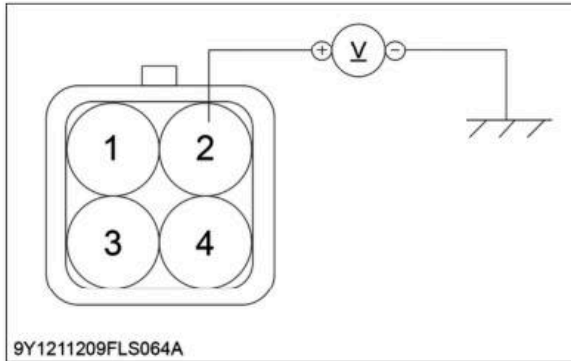
- | | | |
|----------------------|---------------------|-------------|
| (1) Control valve | (4) Direction valve | P: P port |
| (2) Solenoid valve A | A: A port | T: T port |
| (3) Solenoid valve B | B: B port | LS: LS port |

4. FRONT LOADER

3. Measure the voltage between terminal 2 and body earth (Wiring harness side).
If the measurement differs from battery voltage, check the electric circuit between battery and activation switch.

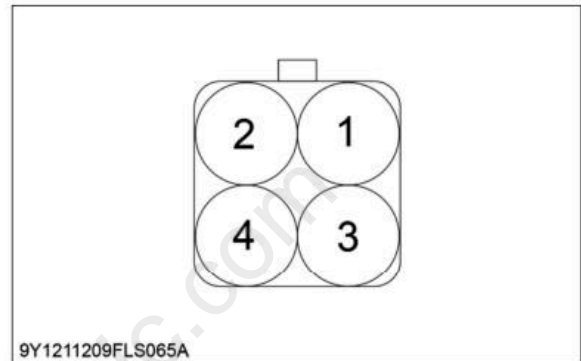
(Reference)

Switch connector voltage	Terminal 2 – body earth	Battery voltage
--------------------------	-------------------------	-----------------



(Reference)

Resistance	Terminal 2 – terminal 1	ON position	0 Ω
		OFF position	Infinity
	Terminal 2 – terminal 3	ON position	0 Ω
		OFF position	Infinity
	Terminal 2 – terminal 4	ON position	0 Ω
		OFF position	Infinity



4.4.6 Checking resistance of activation switch (open center model)

1. Disconnect connector (1) of activation switch.



(1) Connector

2. Check the resistance with ohmmeter between following terminals (switch side).
When checking 3rd function A activation switch, measure resistance between terminal 2 and terminal 1.
When checking 3rd function A activation switch, measure resistance between terminal 2 and terminal 3.
When checking 4th function activation switch, measure resistance between terminal 2 and terminal 4.
If 0 ohm is not indicated, replace activation switch.

4.4.7 Checking voltage of ON-OFF switch (open center model)

1. Disconnect connector (1) of ON-OFF switch.



(1) Connector

2. Turn key switch ON.

Full Version Available

Kubota LM2605 Front Loader Workshop Manual

This is a short preview. The complete manual contains all chapters, wiring diagrams, torque specifications and full service procedures.

VIEW THE FULL MANUAL

<https://machinecatalogic.com/kubota-lm2605-front-loader-workshop-manual/>