

# WSM

---

WORKSHOP MANUAL  
TRACTOR

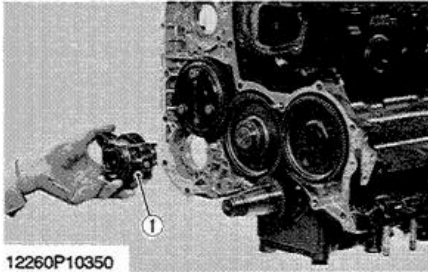
M90

M110

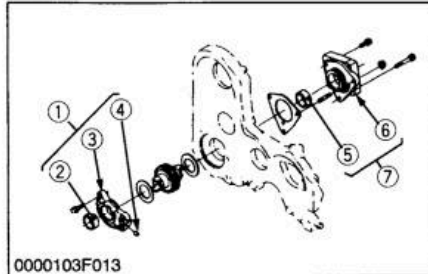
M120

---

**Kubota**



12260P10350

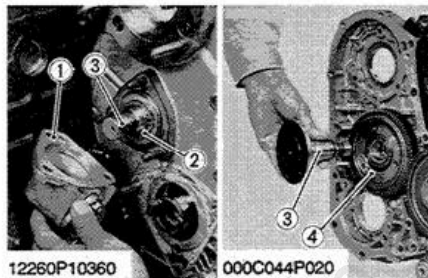


0000103F013

**Hydraulic Pump Drive Gear**

1. Remove the hydraulic pump base (with hydraulic pump drive gear).

- |                                  |                                  |
|----------------------------------|----------------------------------|
| (1) Hydraulic Pump Base Complete | (5) Bushing                      |
| (2) Bushing                      | (6) Hydraulic Pump Base          |
| (3) Hydraulic Pump Base          | (7) Hydraulic Pump Base Complete |
| (4) Pin                          |                                  |



12260P10360

000C044P020

**Fuel Pump Gear**

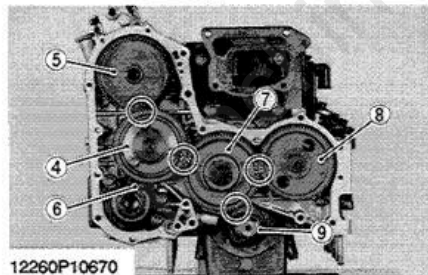
1. Remove the fuel pump base (1).
2. Remove the external snap ring (2) of the fuel pump gear shaft.
3. Remove the three screws of the fuel pump gear (4) and the fuel pump gear shaft (3).
4. Draw out the fuel pump gear shaft and fuel pump gear (4).

(When reassembling)

**■ IMPORTANT**

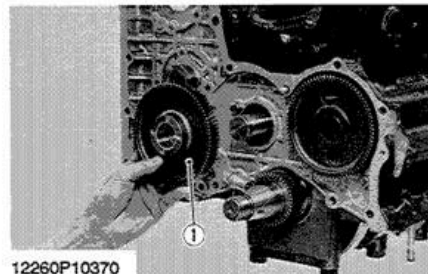
● Align all mating marks on each gear to assemble the timing gears. Set the idle gear last.

- |                          |                               |
|--------------------------|-------------------------------|
| (1) Fuel Pump Base       | (6) Hydraulic Pump Drive Gear |
| (2) External Snap Ring   | (7) Idle Gear                 |
| (3) Fuel Pump Gear Shaft | (8) Cam Gear                  |
| (4) Fuel Pump Gear       | (9) Crank Gear                |
| (5) Injection Pump Gear  |                               |



12260P10670

12260S10560



12260P10370

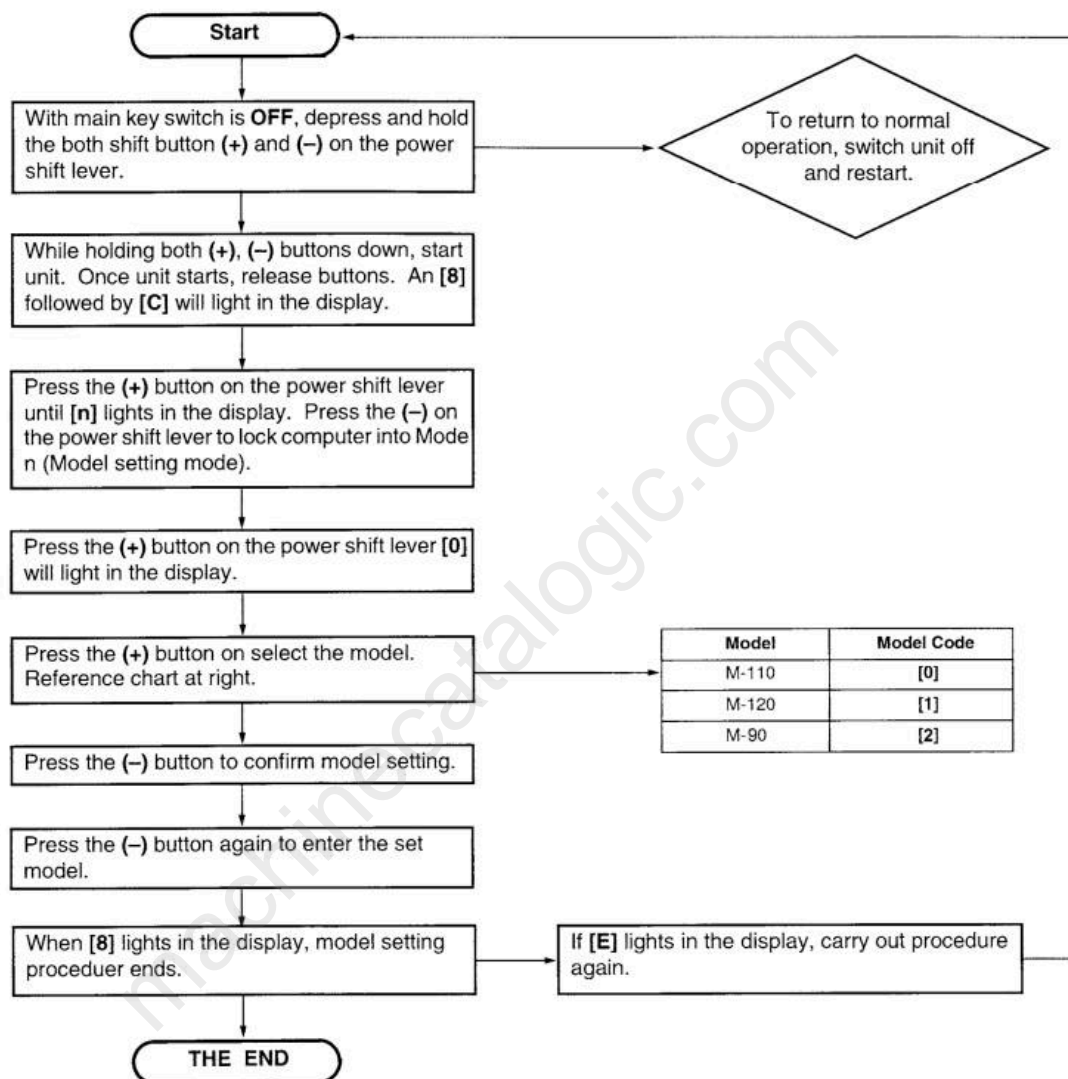
**Idle Gear**

1. Remove the external snap ring.
2. Detach the idle gear (1).

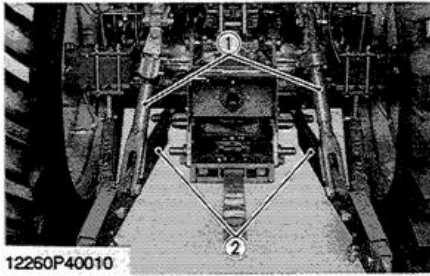
- (1) Idle Gear

12260S10570

## MODE n (MODEL SETTING) INITIAL SETTING PROCEDURE



12260S31460



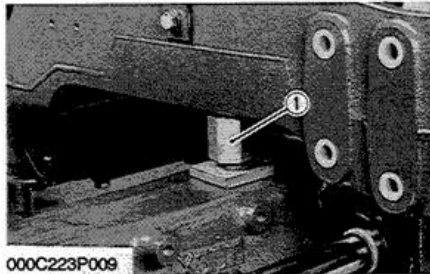
**3-point Hitch**

1. Remove the lift rod (1).
2. Remove the lower link (2).

(1) Lift Rod

(2) Lower Link

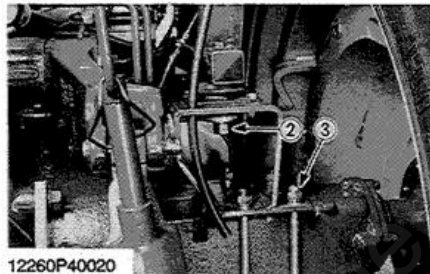
12260S40050



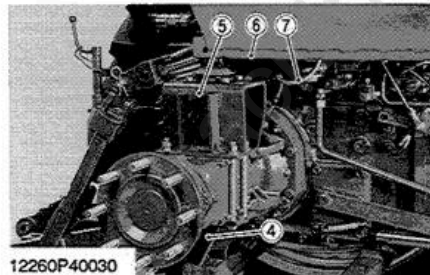
**Cabin Mount Bracket Rear**

1. Place the disassembling stand under the transmission case.
2. Set the rocking restrictor (1) to the front axle.
3. Remove the rear wheel.
4. Remove the cabin mounting bolt and nut (2).
5. Set the cabin stand.
6. Remove the rear bracket mounting bolts and nuts (3).
7. Remove the stabilizer bracket (4).
8. Raise the cabin frame (6) until the rear bracket (5) becomes free to move.
9. Remove the rear bracket (6).

**(When reassembling)**



Tightening torque	Rear wheel mounting nut	402 N-m 41 kgf-m 296 ft-lbs	
	Cabin mounting bolt and nut	108 to 127 N-m 11 to 13 kgf-m 79.6 to 94.0 ft-lbs	
	Rear bracket mounting bolt and nut	M16	196 to 225 N-m 20 to 23 kgf-m 145 to 166 ft-lbs
		M18	275 to 313 N-m 28 to 32 kgf-m 203 to 231 ft-lbs



- |                                        |                  |
|----------------------------------------|------------------|
| (1) Rocking Restrictor                 | (5) Rear Bracket |
| (2) Cabin Mounting Bolt and Nut        | (6) Cabin Frame  |
| (3) Rear Bracket Mounting Bolt and Nut | (7) Brake Hose   |
| (4) Stabilizer Bracket                 |                  |

12260S40060



# Full Version Available

Kubota M90 Tractor Workshop Manual

This is a short preview. The complete manual contains all chapters, wiring diagrams, torque specifications and full service procedures.

**VIEW THE FULL MANUAL**

<https://machinecatalogic.com/kubota-m90-tractor-workshop-manual/>