

# WSM

---

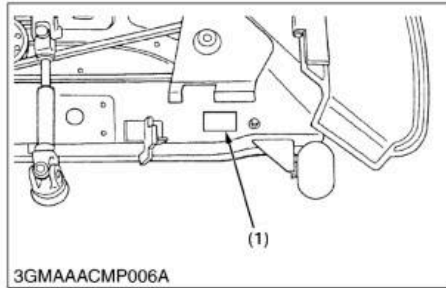
## WORKSHOP MANUAL ROTARY MOWER

RCK48-15BX, RCK48-22BX,  
RCK54-15BX, RCK54-22BX,  
RCK60B-22BX

---

**Кубота**

## 1. MOWER IDENTIFICATION

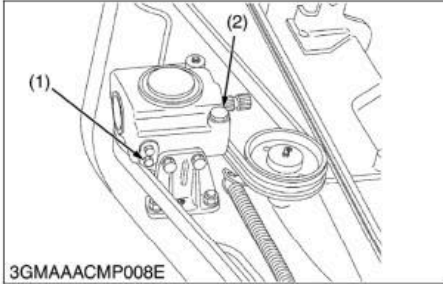


When contacting your local KUBOTA distributor, always specify mower serial number.

(1) Mower Serial Number

W1020623

machinecatalogic.com

**[2] CHECK POINT OF INITIAL 50 HOURS****Changing Gear Box Oil**

1. Dismount the mower from the tractor, and place the mower on level ground.
2. Remove the oil filler plug (2).
3. Remove the drain plug (1), and drain the used oil completely.
4. After draining the used oil, reinstall the drain plug.
5. Fill with new oil up to the specified level.

**■ IMPORTANT**

- Use the specified gear oil.  
Refer to "LUBRICANTS". (See page G-3.)

(1) Drain Plug

(2) Oil Filler Plug

W1028353

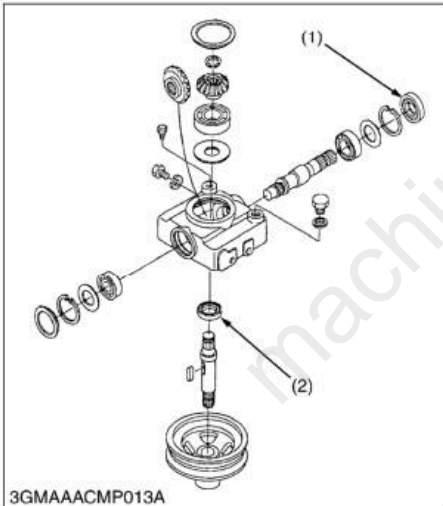
**[3] CHECK POINT OF EVERY 150 HOURS****Changing Gear Box Oil**

1. See above.

W1029013

**[4] CHECK POINT OF EVERY 1 YEAR****Checking Gear Box Oil Seal**

1. See below.

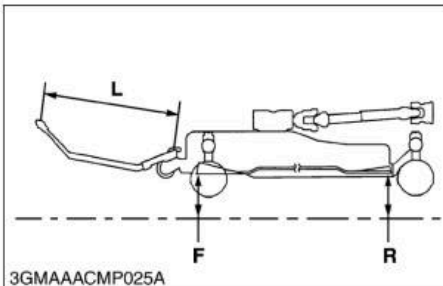
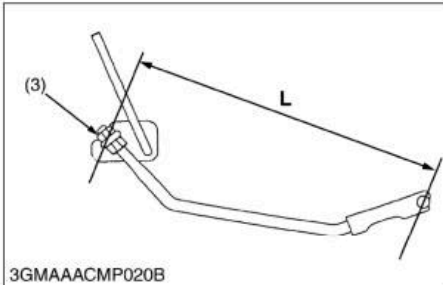
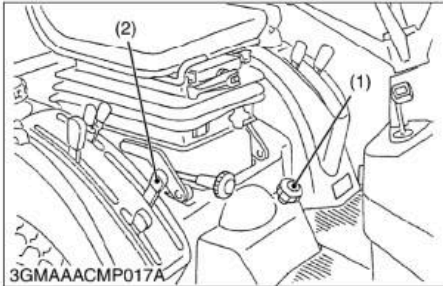
**[5] CHECK POINT OF EVERY 4 YEARS****Replacing Gear Box Oil Seal**

1. Replace the gear box oil seals (1), (2) with new ones. (See page S-7.)

(1) Oil Seal

(2) Oil Seal

W1029072



### Adjusting Front and Rear Cutting Height

1. Tire pressure must be correct.
2. Operate the hydraulic control lever (2) rearward to raise the mower deck to the highest position.
3. Stop the engine and remove the key.
4. Set the cutting height control dial (1) to "2.0" position and the anti-scalp rollers (see page G-14).
5. Operate the hydraulic control lever (2) forward to lower the mower deck.
6. Turn the right blade by hand parallel to direction of travel.
7. Measure the heights of blade (F) and (R) from the ground surface and calculate the difference.
8. If the difference between front tip and rear tip of blade is not within the factory specification, adjust the length (L) of front link with lock nut (3). The height of rear blade tip (R) should be bigger than the front.

Difference (R-F) (R ≥ F) between front tip and rear tip of blade	Factory spec.	0.0 to 5.0 mm 0.0 to 0.1968 in.
--	---------------	------------------------------------

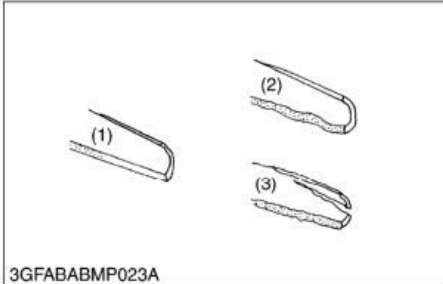
- (1) Cutting Height Control Dial  
 (2) Hydraulic Control Lever  
 (3) Lock Nut

**L : Length of Front Link**  
**F : Height of Blade Tip (Front)**  
**R : Height of Blade Tip (Rear)**

W1018083

## 4. CHECKING, DISASSEMBLING AND SERVICING

### [1] CHECKING AND ADJUSTING



#### Checking Mower Blade

1. Check the cutting edge of mower blade.
2. Sharpen the cutting edges, if the mower blades are as shown in figure (2).
3. Replace the mower blades, if they are as shown in figure (3).

#### ■ IMPORTANT

- Never forget to set the dust cover, cup washer(s) and lock washer (RCK54-15BX, RCK54-22BX and RCK60B-22BX), when reassembling the mower blades. (See page S-5.)

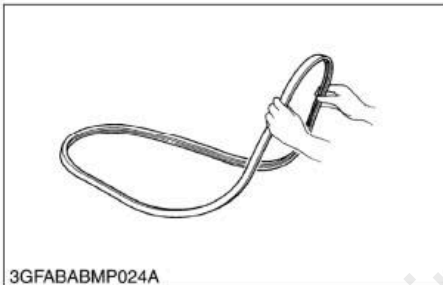
#### ■ NOTE

- To sharpen the mower blades by yourself, clamp the mower blade securely in a vise and use a large mill file along the original level.
- To balance the mower blade, place a small rod through the center hole and check to see if the blade balance evenly. File heavy side of the blade until it balance out even.

- (1) New Blade  
(2) Worn Blade

- (3) Cracked Blade

W1011041

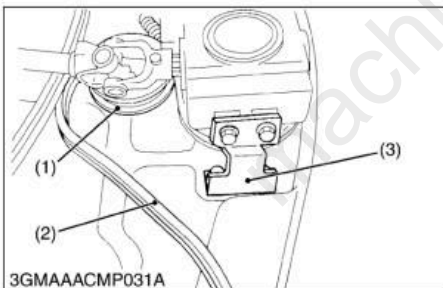


#### Checking Mower Belt

1. Check to see the mower belt.
2. Replace the mower belt with a new one, if there is found surface split at more than 3 positions.

#### (When replacing mower belt)

1. Dismount the mower from the tractor.
2. Remove the left and right hand belt cover from the mower deck.
3. Clean around the gear box.
4. Remove the right hand bracket (3) which mounts the gear box to the mower deck.
5. Remove the mower belt (2) from the tension pulley (1). Slip the mower belt over the top of the gear box.
6. To install a new belt, reverse the above procedure.



Tightening torque	Gear box RH mounting screw and nut	77.4 to 90.2 N m 7.9 to 9.2 kgf-m 57.1 to 66.5 ft-lbs
-------------------	------------------------------------	---

#### ■ IMPORTANT

- After setting the gear box bracket mounting screws on the deck without tightening, then mount the other screws on the gear box. And finally tighten them.

- (1) Tension Pulley  
(2) Mower Belt

- (3) Gear Box Bracket (Right)

W1011180

## Full Version Available

Kubota RCK60B-22BX Rotary Mower Workshop Manual

This is a short preview. The complete manual contains all chapters, wiring diagrams, torque specifications and full service procedures.

[VIEW THE FULL MANUAL](#)