

ORIGINAL INSTRUCTIONS

machinecatalogic.com

CX255E SR
Crawler Excavator

OPERATOR'S MANUAL

Part number 92756620
1st edition English
June 2026



Payload sub menu

TRUCK SETTING



On the truck setting screen, you can set the truck to be loaded with the payload function.

(1)	Truck icon	The icon displayed on the payload screen, is displayed in the color set in (4).
(2)	NAME	You can register the identification name of the truck.
(3)	TARGET WT.	You can set the target loading weight of the truck.
(4)	COLOR	You can set the color displayed by the truck icon (1).

NOTE: The truck setting is displayed in the units set in the DISPLAY CONFIGURATION menu.

NAME (How to register/edit)

NAME allows you to edit the truck name. Enter a name that makes it easy to manage the truck, such as truck number.

Select NAME (1) and press the ► function switch (5) to highlight the first character, and press the ◀ function switch (3) to highlight the 9th character and editing begins.

Highlight the character you want to edit and press the ▲▼ function switch (4) to select the character. (press and hold to change character quickly)

To finish the editing, press the ◀ function switch (3) with the first character highlighted, then press the ► function switch (5) with the 9th character highlighted, or press the function switch (2) to finish editing.

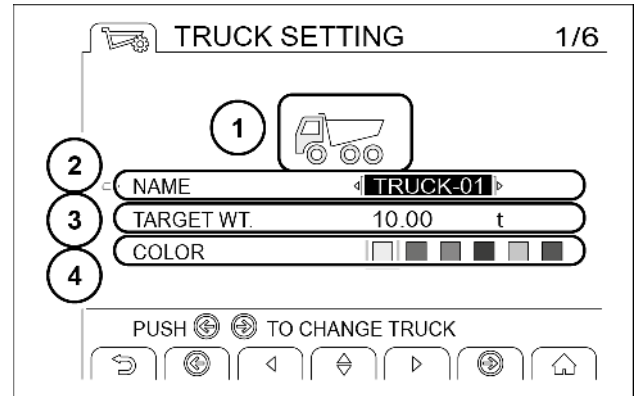
NOTE: You can select NAME from single-byte alphanumeric characters and symbols.

NOTE: You can set a maximum of 9 characters.

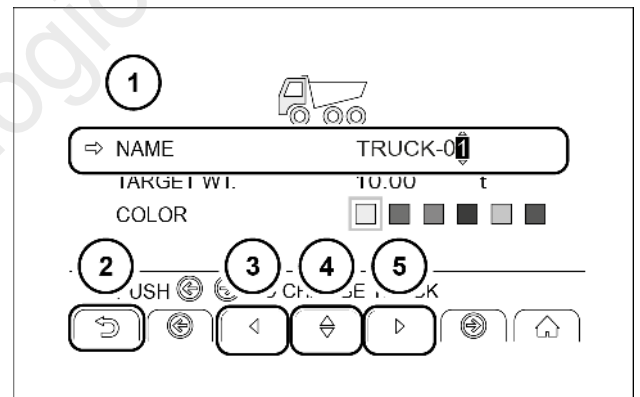
NOTE: You are not allowed to register multiple trucks with the same name.

NOTE: You cannot leave NAME blank.

NOTE: If you operate the lever during editing, the editing is interrupted and the payload main screen is displayed.



SMIL24CEX1192AB 66



SMIL24CEX1193AB 67

Height and depth alarm operation image

Select the work tool. Make sure that the work tool actually installed on the shovel is the same as the set work tool. For details, refer to "WORK TOOL SETTING".

NOTICE: When using the height and depth alarm, enter the correct dimension values on the work tool setting screen. The alarm does not sound at the intended height and depth when incorrect values have been entered.

Set the height and depth alarm to ON.

NOTICE: The height and depth alarm is a function that notifies the user that the attachment is approaching the height and depth set by the user. Therefore, this function automatically detects obstacles such as electric power supply lines, telephone lines, buried pipes, and telephone lines. Always keep an eye on the attachment when using it. Failure to comply may result in death or serious injury.

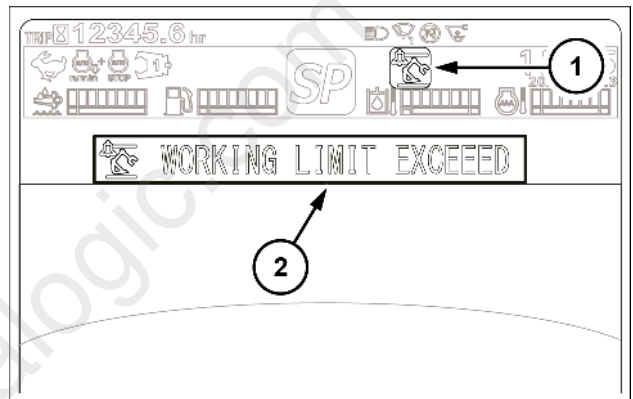
NOTICE: When using the height and depth alarm, enter the correct dimension values on the work tool setting screen. The alarm does not sound at the intended height and depth when incorrect values have been entered. For details, refer to "WORK TOOL SETTING".

After thoroughly confirming whether it is a safe place, move the attachment and if the attachment approaches within **1.0 m** of the set height alarm line and within **0.5 m** of the set depth alarm line, the height and depth alarm icon (1) will flash yellow and an alarm will sound.

Furthermore, if the attachment exceeds the height-depth alarm line, the height-depth alarm icon (1) will light up yellow, the alarm will change, and the text message "WORKING LIMIT EXCEED" (2) will be displayed.

Refer to "Height and Depth Alarm (option)" for the types of alarms and icons and the text messages displayed.

Work should be performed only after the operation of the height-depth alarm has been verified. Note the following points when working.

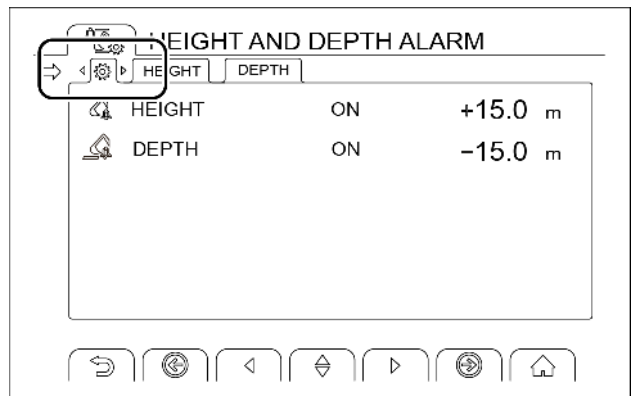


SMIL24CEX1523AB 215

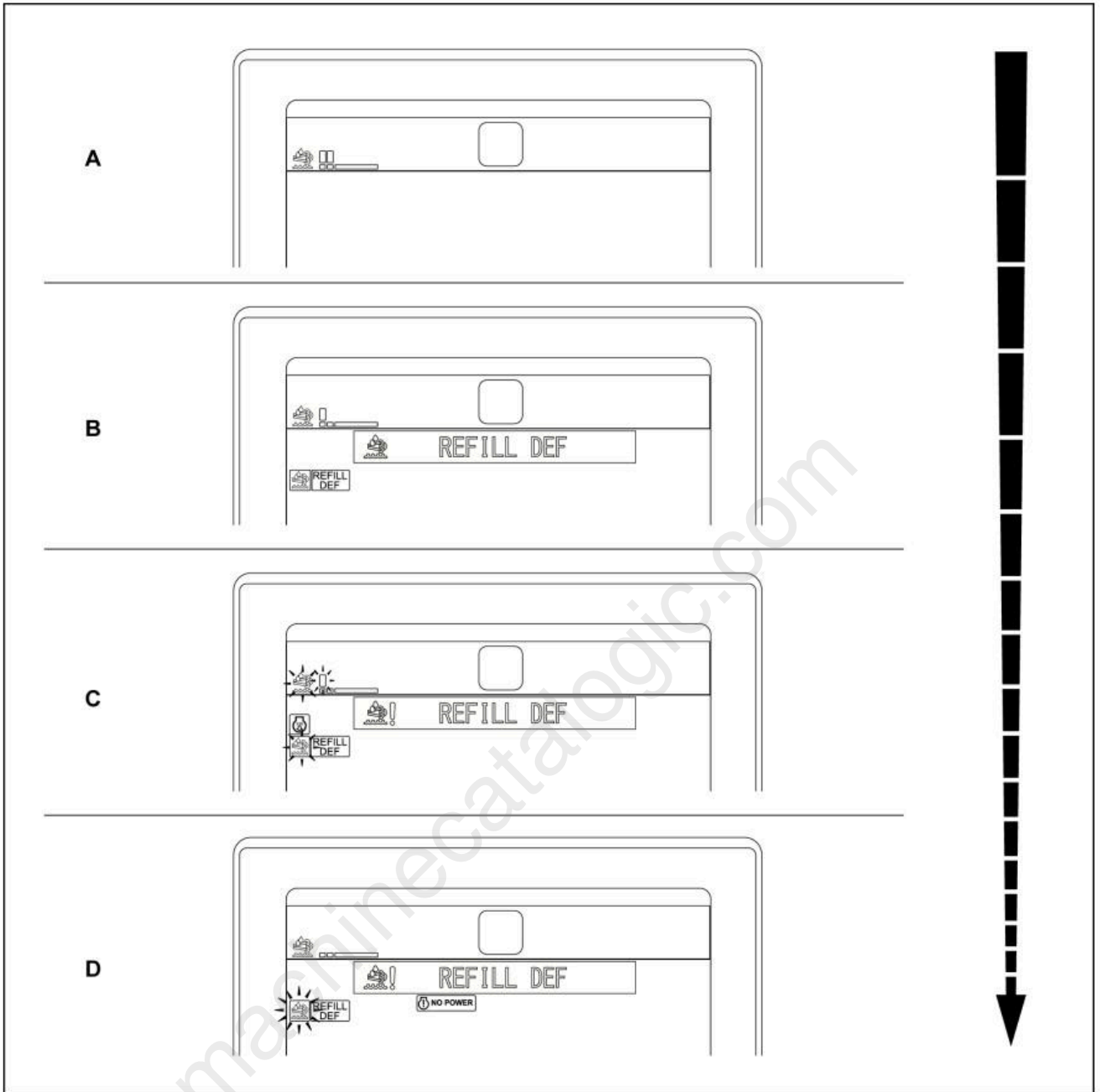
Height and depth alarm setting

You can switch the set height-depth alarm functions ON and OFF.

Select the Settings tab to change settings.



SMIL24CEX1524AB 216



SMIL22CEX4037GA 3

- (A) Normal condition
- (B) Warning to the operator
- (C) Moderate inducement
- (D) Severe inducement

Every 4000 hours

Engine coolant

⚠ WARNING

Hazardous chemicals!

Coolant can be toxic. Avoid contact with skin, eyes, and clothing. Antidotes:

EXTERNAL - Rinse thoroughly with water. Remove soiled clothing.

INTERNAL - Rinse the mouth with water. **DO NOT** induce vomiting. Seek immediate medical attention.

EYES - Flush with water. Seek immediate medical attention.

Failure to comply could result in death or serious injury.

W0282A

⚠ WARNING

Burn hazard!

Hot coolant can spray and scald if you remove the radiator or deaeration tank cap while the system is hot. To remove the cap: allow the system to cool, turn the cap to the first notch, and wait for all pressure to release. Remove the cap only after all pressure has released.

Failure to comply could result in death or serious injury.

W0367A

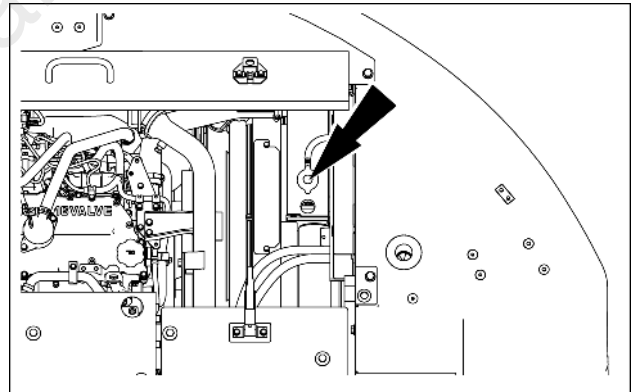
Replace the engine coolant every **4000 h** or every 2 years

Fluid: **EXTENDED LIFE OAT COOLANT/ANTIFREEZE**

Quantity (50/50 antifreeze/deionized water mixture): **31.9 L (8.4 US gal)**

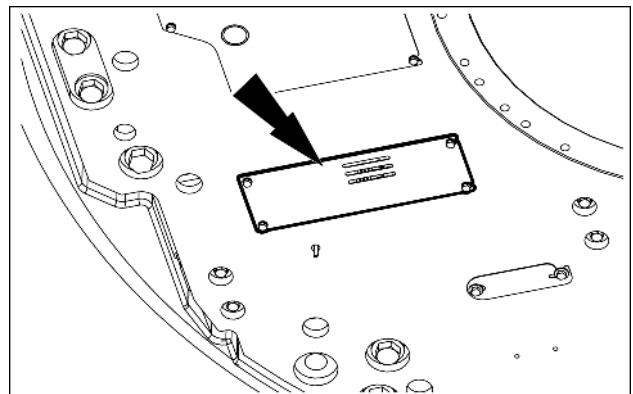
Draining the engine cooling system

1. Stop the engine and let it cool down.
2. Reach the service platform in the center of the machine. Refer to page **Service platform**.
3. Disengage the latches and raise the engine hood. Fix the engine hood with the stay.
4. Remove the radiator cap.



SMIL17CEX0215AA 1

5. Remove the lower panel.



SMIL26CEX1221AA 2

Full Version Available

Case CX255E SR Crawler Excavator Operator's Manual (92756620) (June 2026)

This is a short preview. The complete document contains all sections, diagrams, part numbers or specifications, and full procedures.

VIEW THE FULL MANUAL

<https://machinecatalogic.com/case-cx255e-sr-crawler-excavator-operator-s-manual-92756620/>